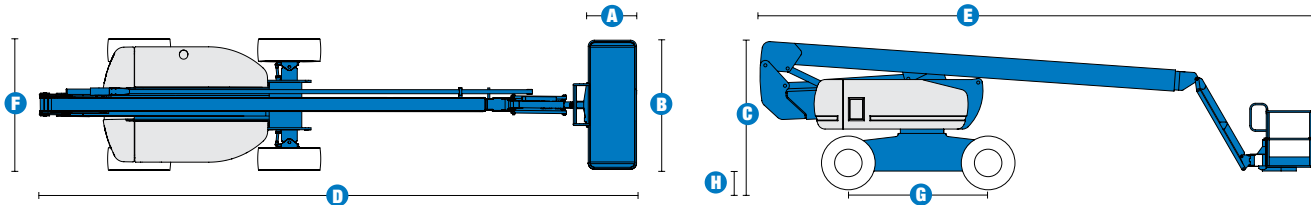


Specifications



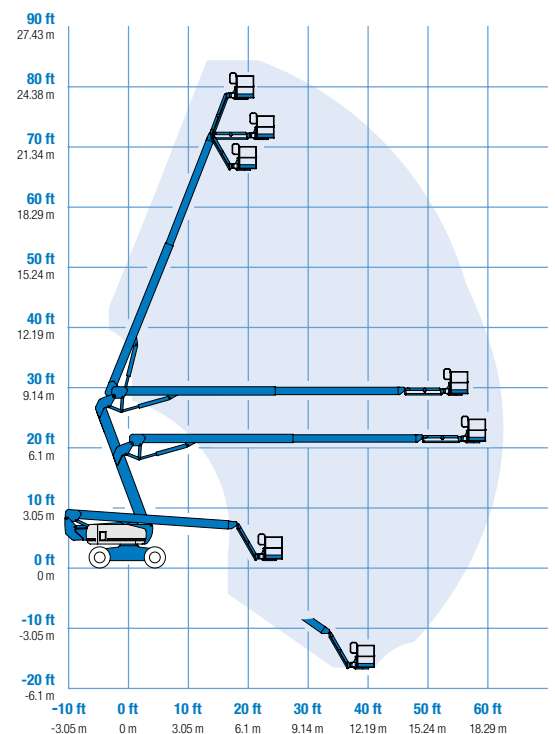
| MODEL | Z™-80/60 | |
|------------------------------------|----------|-------------|
| MEASUREMENTS | Metric | US |
| Working height maximum* | 25.77 m | 84 ft |
| Platform height maximum | 23.77 m | 78 ft |
| Horizontal reach maximum | 18.29 m | 60 ft |
| Up and over clearance maximum | 8.83 m | 29 ft |
| Below ground reach | 4.83 m | 15 ft 10 in |
| A Platform length | 0.91 m | 3 ft |
| B Platform width | 2.44 m | 8 ft |
| C Height - stowed | 3.00 m | 9 ft 10 in |
| D Length - stowed | 11.27 m | 37 ft |
| E Length - transport | 11.27 m | 37 ft |
| F Width | 2.49 m | 8 ft 2 in |
| G Wheelbase | 2.85 m | 9 ft 4 in |
| H Ground clearance - centre | 0.30 m | 12 in |

| PRODUCTIVITY | | |
|----------------------------------|---------------------|------------|
| Lift capacity | 227 kg | 500 lbs |
| Platform rotation | 160° | 160° |
| Vertical jib rotation | 135° | 135° |
| Turntable rotation | 360° continuous | |
| Turntable tailswing - riser up | 1.17 m | 3 ft 10 in |
| Turntable tailswing - riser down | 2.24 m | 7 ft 4 in |
| Drive speed - stowed | 4.83 km/h | 3.0 mph |
| Drive speed - raised** | 1.1 km/h | 0.68 mph |
| Lift speed to full height | 76 sec | 76 sec |
| Gradeability - 4WD - stowed*** | 45% | 45% |
| Turning radius - 4WS inside | 2.13 m | 7 ft |
| Turning radius - 4WS outside | 4.57 m | 15 ft |
| Controls | 12V DC proportional | |
| Tyres - RT Lug - Foam filled | 445 / 500 710 | |

| POWER | | |
|--------------------------------------|--|--------|
| Power source | Deutz TD 2011 L04i 4 cylinder diesel 58 kW (78 hp) | |
| Auxiliary power unit | 12V DC | 12V DC |
| Hydraulic tank capacity | 170 L | 45 gal |
| Fuel tank capacity – diesel machines | 132 L | 35 gal |

| WEIGHT**** | | |
|------------|-----------|------------|
| | 17,010 kg | 37,500 lbs |

RANGE OF MOTION Z™-80/60



STANDARDS COMPLIANCE ANSI A92.5, CSA B354.4, CE Compliance, AS 1418.10

* The metric equivalent of working height adds 2 m to platform height. U.S. adds 6 ft to platform height.
 ** In lift mode (platform raised), the machine is designed to operate on firm, level surfaces only.
 *** Gradeability applies to driving on slopes. See operator's manual for details regarding slope ratings.
 **** Weight will vary depending on options and/or country standards.