

# Genie® S®-85 XC™

## Specifications

Models	S-85 XC	
Measurements	US	Metric
Working height max. <sup>(1)</sup>	91 ft	27.91 m
Platform height max.	85 ft	25.91 m
Horizontal reach max.	74 ft 6 in	22.71 m
Below ground reach	8 ft 8 in	2.64 m
<b>A</b> Platform length (8 ft/6 ft)	3 ft/2 ft 6 in	0.91 m/0.76 m
<b>B</b> Platform width (8 ft/6 ft)	8 ft/6 ft	2.44 m/1.83 m
<b>C</b> Height - stowed	9 ft 2 in	2.80 m
<b>D</b> Length - stowed	40 ft 7 in	12.37 m
<b>D</b> Length - storage/transport (jib tucked under)	33 ft 8 in	10.25 m
<b>E</b> Width	8 ft 2 in	2.49 m
<b>F</b> Wheelbase	9 ft 4 in	2.85 m
<b>G</b> Ground clearance - center	15.8 in	0.40 m
<b>H</b> Height under counterweight	3 ft 9 in	1.14 m

## Productivity

Lift capacity max. - unrestricted	660 lb	300 kg
Lift capacity max. - restricted	1,000 lb	454 kg
Number of Platform Occupants (restricted/unrestricted)		3/2
Platform rotation		160°
Jib length	5 ft	1.52 m
Vertical jib rotation (up/down)		133°
Turntable rotation		360°
Turntable tailswing	5 ft 3 in	1.60 m
Drive speed - stowed	3.0 mph	4.8 km/h
Drive speed - raised	0.5 mph	0.2 m/s
Gradeability - stowed <sup>(2)</sup>		45%
Tilt sensor activation (front to back/side to side)		7°/5°
Turning radius - inside/outside	12 ft/21 ft 6 in	3.66 m/6.55 m
Tires		18-625

## Power

Power		Diesel
Hydraulic tank capacity	40 gal	150 L
Fuel tank capacity	35 gal	132 L

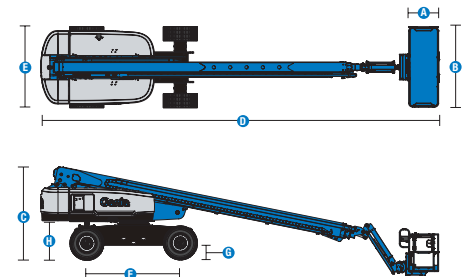
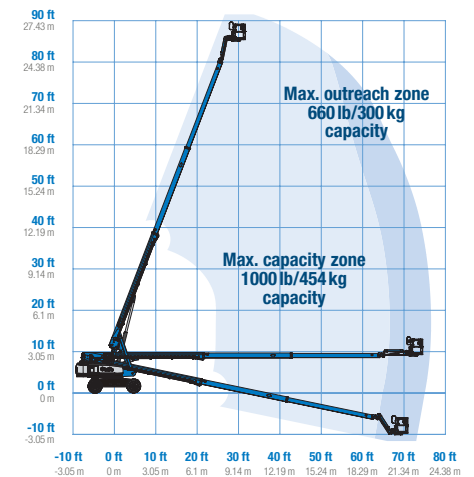
## Weight<sup>(3)</sup> and Floor Loading<sup>(4)</sup>

Weight	39,500 lb	17,917 kg
Tire contact pressure	130 psi	896 kPa
Occupied floor pressure	395 psf	18.9 kPa

## Sound and Vibration Levels

Sound Pressure level (ground workstation)	85 dBA
Sound Pressure level (platform workstation)	78 dBA
Vibrations	< 2.5 m/s <sup>2</sup>

## Range of motion S-85 XC



(1) The metric equivalent of working height adds 2 m to platform height. The imperial equivalent adds 6 ft to platform height.

(2) Gradeability applies to driving on slopes and may vary depending on options and machine configurations. See operator's manual for details regarding slope ratings.

(3) Weight refers to standard configuration and may vary depending on options and/or country standards.

(4) Floor loading information is approximate and may vary depending on options and machine configurations. It should be used only with adequate safety factors.