

Safety

Linde ProtectorFrame: Overhead guard and frame form a structural unit, resulting in maximum stability and safety. Top-mounted tilt jacks allow use of slim mast channel sections for optimum visibility

Performance

Advanced engine and drive technology combined with the intelligent Linde Load Control system and precise fingertip control of all mast functions, enables the operator to use the truck's impressive potential to maximise productivity.

Comfort

A perfect interface between operator and truck has been achieved with the Linde ergonomic design concept. The spacious, cushioned cab comfort-class seat with adjustable armrest and integrated intuitive controls create a superb stress-free environment that promotes optimum efficiency and high productivity.

Reliability

Proven in tough sustained operation. Isolation of the cab from the mast, drive axle and chassis, cushions the operator from road shocks and vibrations. Maintenance-free mounting of axles and tilt jacks increases uptime and reduces costs.

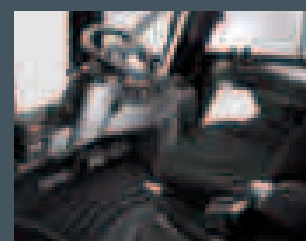
Productivity

This superb range is fitted with the renowned Linde hydrostatic transmission, which requires no differential, no conventional service brake, no gear box and no clutch. As a result, uptime is optimised, productivity is increased and maintenance costs are low.



Linde hydrostatic steering

- No kickback and virtually no play
- Ergonomic size of steering wheel
- Unsurpassed maneuverability in this truck size category, including tight cornering



Linde operator compartment

- Spacious cab with automobile-equivalent legroom
- Excellent visibility of load and surroundings due to slim-line mast sections
- Cushioned drive axle reduces road shock



Linde Load Control

- Accurate, safe load handling
- Effortless fingertip control of all mast functions
- Traction and lift functions completely separate



Linde clear-view mast

- Superb visibility through slim-profile sections of mast
- Full load capacity up to maximum lift height
- Exceptional residual capacity

Model designation		H 40 D	H 40 T	H 45 D	H 45 T	H 50 D	H 50 T
Power unit: battery, diesel, petrol, LP gas, mains power		Diesel	LPG	Diesel	LPG	Diesel	LPG
Load capacity	Q (kg)	4000	4000	4500	4500	5000	5000
Load centre	c (mm)	500	500	500	500	500	500
Service weight	kg	5785	5968	6295	6480	6580	6763
Mast lift, forward/backward	α/β (°)	5.0/9.0	5.0/9.0	5.0/9.0	5.0/9.0	5.0/9.0	5.0/9.0
Height of mast, lowered	h1 (mm)	2420(2375/ 2375) ^{2) 3)}	2420(2375/ 2375) ^{2) 3)}	2421(2376/ 2376) ^{2) 3)}	2421(2376/ 2376) ^{2) 3)}	2421(2376/ 2376) ^{2) 3)}	2421(2376/ 2376) ^{2) 3)}
Lift	h3 (mm)	3100 3130/ 4675) ^{2) 3)}	3100 3130/ 4675) ^{2) 3)}	3000 3030/ 4525) ^{2) 3)}	3000 3030/ 4525) ^{2) 3)}	3000 3030/ 4525) ^{2) 3)}	3000 3030/ 4525) ^{2) 3)}
Height of overhead guard	h6 (mm)	2383	2383	2416	2416	2416	2416
Overall length	l1 (mm)	3984	3984	4066	4066	4116	4116
Length to fork face	l2 (mm)	2984	2984	3066	3066	3116	3116
Overall width	b1/b2 (mm)	1446/1423 (2003/ 1423) ¹⁾	1446/1423 (2003/ 1423) ¹⁾	1448/1423 (1988/ 1423) ¹⁾	1448/1423 (1988/ 1423) ¹⁾	1448/1423 (1988/ 1423) ¹⁾	1448/1423 (1988/ 1423) ¹⁾
Aisle width pallet 1000 x 1200 across forks	Ast (mm)	4355	4355	4433	4433	4480	4480
Aisle width pallet 800 x 1200 along forks	Ast (mm)	4555	4555	4633	4633	4680	4680
Travel speed, with/without load	km/h	21/21	21/21	24/24	24/24	24/24	24/24
Lifting speed, with/without load	m/s	0.53/0.56	0.53/0.56	0.53/0.56	0.53/0.56	0.48/0.50	0.48/0.50
Engine manufacturer/type		VW/BJC	VW/BMF	VW/BJC	VW/BMF	VW/BJC	VW/BMF
Engine performance according to ISO 1585	kW	53	55	53	55	53	55
Number of cylinders	cm ³	4/1896	6/3189	4/1896	6/3189	4/1896	6/3189

1) Figures in parentheses for SE twin tyres: H 40, 250 - 15, H 45/H 50, 8.25 - 15

2) With 150 mm free lift on standard mast

3) Figures in parentheses for duplex/triplex mast

* available on request