

### Safety

Linde ProtectorFrame: Overhead guard and frame form a structural unit, resulting in maximum stability and safety. Top-mounted tilt jacks allow use of slim mast channel sections for optimum visibility

### Performance

Advanced engine and drive technology combined with the intelligent Linde Load Control system and precise fingertip control of all mast functions, enables the operator to use the truck's impressive potential to maximise productivity.

### Comfort

A perfect interface between operator and truck has been achieved with the Linde ergonomic design concept. The spacious, cushioned cab comfort-class seat with adjustable armrest and integrated intuitive controls create a superb stress-free environment that promotes optimum efficiency and high productivity.

### Reliability

Proven in tough sustained operation. Isolation of the cab from the mast, drive axle and chassis, cushions the operator from road shocks and vibrations. Maintenance-free mounting of axles and tilt jacks increases uptime and reduces costs.

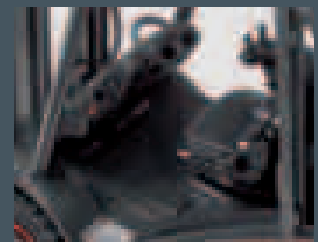
### Productivity

This superb range is fitted with the renowned Linde hydrostatic transmission, which requires no differential, no conventional service brake, no gear box and no clutch. As a result, uptime is optimised, productivity is increased and maintenance costs are low.



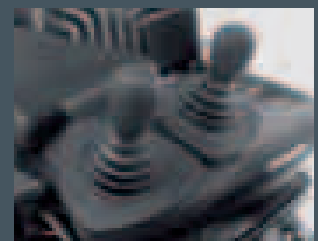
#### Linde hydrostatic steering

- No kickback and virtually no play
- Ergonomic size of steering wheel
- Unsurpassed maneuverability in this truck size category, including tight cornering



#### Linde operator compartment

- Spacious cab with automobile-equivalent legroom
- Excellent visibility of load and surroundings due to slim-line mast sections
- Cushioned drive axle reduces road shock



#### Linde Load Control

- Accurate, safe load handling
- Effortless fingertip control of all mast functions
- Traction and lift functions completely separate



#### Linde clear-view mast

- Superb visibility through slim-profile sections of mast
- Full load capacity up to maximum lift height
- Exceptional residual capacity

Model designation		H 25 D	H 25 T	H 30 D	H 30 T	H 35 D	H 35 T
Power unit: battery, diesel, petrol, LP gas, mains power		Diesel	LPG	Diesel	LPG	Diesel	LPG
Load capacity	Q (kg)	2500	2500	3000	3000	3500	3500
Load centre	c (mm)	500	500	500	500	500	500
Service weight	kg	3870	3850	4220	4200	4680	4665
Mast lift, forward/backward	$\alpha/\beta$ (°)	5.0/8.0 <sup>3)</sup>	5.0/8.0 <sup>3)</sup>	5.0/8.0 <sup>3)</sup>	5.0/8.0 <sup>3)</sup>	5.0/8.0 <sup>3)</sup>	5.0/8.0 <sup>3)</sup>
Height of mast, lowered	h1 (mm)	2264 <sup>1)</sup>	2264 <sup>1)</sup>	2264 <sup>1)</sup>	2264 <sup>1)</sup>	2264 <sup>1)</sup>	2264 <sup>1)</sup>
Lift	h3 (mm)	3050	3050	3050	3050	3050	3050
Height of overhead guard	h6 (mm)	2210	2210	2210	2210	2210	2210
Overall length	l1 (mm)	3727	3727	3755	3755	3795	3795
Length to fork face	l2 (mm)	2727	2727	2755	2755	2795	2795
Overall width	b1/b2 (mm)	1256 <sup>2)</sup>	1256 <sup>2)</sup>	1256 <sup>2)</sup>	1256 <sup>2)</sup>	1256 <sup>2)</sup>	1256 <sup>2)</sup>
Aisle width pallet 1000 x 1200 across forks	Ast (mm)	4065	4065	4089	4089	4126	4126
Aisle width pallet 800 x 1200 along forks	Ast (mm)	4265	4265	4289	4289	4326	4326
Travel speed, with/without load	km/h	22/22	22/22	22/22	22/22	22/22	22/22
Lifting speed, with/without load	m/s	0.47/0.48	0.47/0.48	0.47/0.48	0.47/0.48	0.47/0.48	0.47/0.48
Engine manufacturer/type		VW/BEU	VW/BEF	VW/BEU	VW/BEF	VW/BEU	VW/BEF
Engine performance according to ISO 1585	kW	43	39	43	39	43	39
Number of cylinders	cm <sup>3</sup>	4/1896	4/1984	4/1896	4/1984	4/1896	4/1984

1) With 150 mm free lift on standard mast

2) 1337 mm for SE 28 x 12.5 - 15 tyres; 1611 mm for SE 7.00 - 12 twin tyres; 1271 mm for P 27 x 10 - 12/20 PR tyres; 1264 mm for P 250/75 R12 tyres; 1614 mm for P 7.00 - 12/16 PR twin tyres; 1630 mm for 7.00 R10 twin tyres

3) Lift height and equipment can alter rear mast tilt angle

\* available on request, except for H 35